



Corrigendum to “Identification and characterization of the cellular subclones that contribute to the pathogenesis of mantle cell lymphoma” [Genes Dis 6(4) 2019 407–418]

Junling Tang^{a,b}, Li Zhang^c, Tiejun Zhou^d, Zhiwei Sun^a,
Liangsheng Kong^a, Li Jing^b, Hongyun Xing^b, Hongyan Wu^b,
Yongli Liu^a, Shixia Zhou^a, Jingyuan Li^a, Mei Chen^b, Fang Xu^e,
Jirui Tang^b, Tao Ma^b, Min Hu^b, Dan Liu^b, Jing Guo^b,
Xiaofeng Zhu^b, Yan Chen^b, Ting Ye^a, Jianyu Wang^{a,***},
Xiaoming Li^{b,**}, H. Rosie Xing^{a,f,*}

^a Laboratory of Translational Cancer Stem Cell Research, Institute of Life Sciences, Chongqing Medical University, Chongqing 400016, PR China

^b Department of Hematology, The Affiliated Hospital of Southwest Medical University, Luzhou, Sichuan 646000, PR China

^c The Affiliated Stomatology Hospital of Southwest Medical University, Luzhou, Sichuan 646000, PR China

^d Department of Pathology, The Affiliated Hospital of Southwest Medical University, Luzhou, Sichuan 646000, PR China

^e Department of Hematology, Mianyang Central Hospital, Jingzhong Street, Mianyang, Sichuan 621000, PR China

^f School of Biomedical Engineering, Chongqing Medical University, Chongqing 400016, PR China

Received 4 June 2021; accepted 6 June 2021

Available online 22 June 2021

DOI of original article: <https://doi.org/10.1016/j.gendis.2018.12.002>.

Peer review under responsibility of Chongqing Medical University.

* Corresponding author. Laboratory of Translational Cancer Stem Cell Research, Institute of Life Sciences, Chongqing Medical University, 1 Yixueyuan Rd, Chongqing 400016, PR China.

** Corresponding author.

*** Corresponding author.

E-mail addresses: wjy2003123@163.com (J. Wang), zlroy2003@163.com (X. Li), xinglab310@163.com (H.R. Xing).

<https://doi.org/10.1016/j.gendis.2021.06.001>

2352-3042/Copyright © 2021, Chongqing Medical University. Production and hosting by Elsevier B.V. All rights reserved.

After publication of the article, the authors recently noticed unintentional errors in Figure 6. Three pairs of sub figures contain misplaced and identical images due to unintentional errors during the preparation of the relevant Figures for publication: (1) Figure 3C, upper panel, lane 3 (CD79a, IgM-group) vs. Figure 6A, lower panel, lane 1 (CCND1, CD19-/IgM-group); (2) Figure 3C, upper panel, lane 6 (CD79a, IgM + group) vs. Figure 6B, lower panel, lane 3 (CCND1, CD19+/IgM + group); (3) Figure 6C (ii), upper panel, lane 4 (IgM) vs. lane 5 (Pax5). Nevertheless, the unintentional errors do not change the conclusion or dis-

cussion of the article. The authors apologize for any inconvenience caused by these unintentional errors.

In addition, there is a set of identical images present in Figure 2A. Since the isotope for CD10-PE and CD22-PE is the same (PE), the control isotope graph for CD10-PE and CD22-PE is the same. Nevertheless, the presentation of the data as it appeared in the original publication may lead to misinterpretation of the results, thus we deleted one image.

The corrected Figure 2A and Figure 6 are provided below:

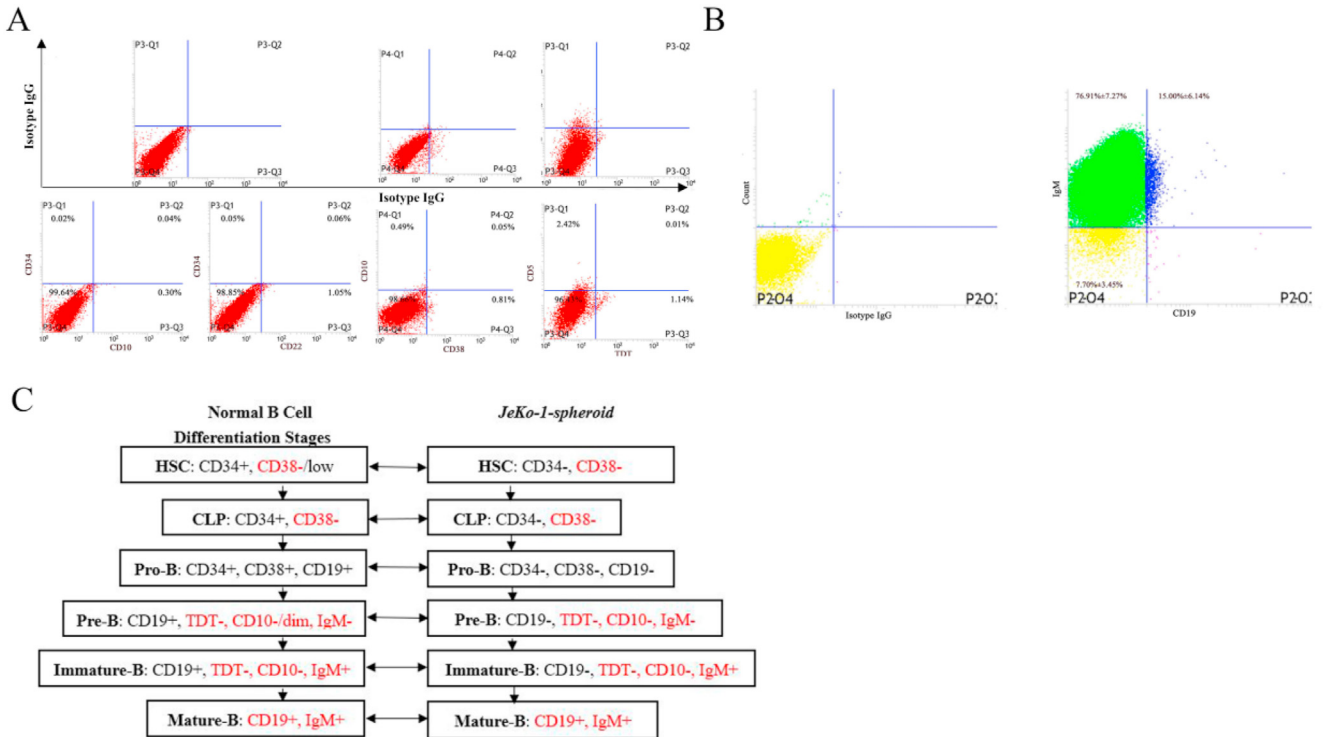


Figure 2

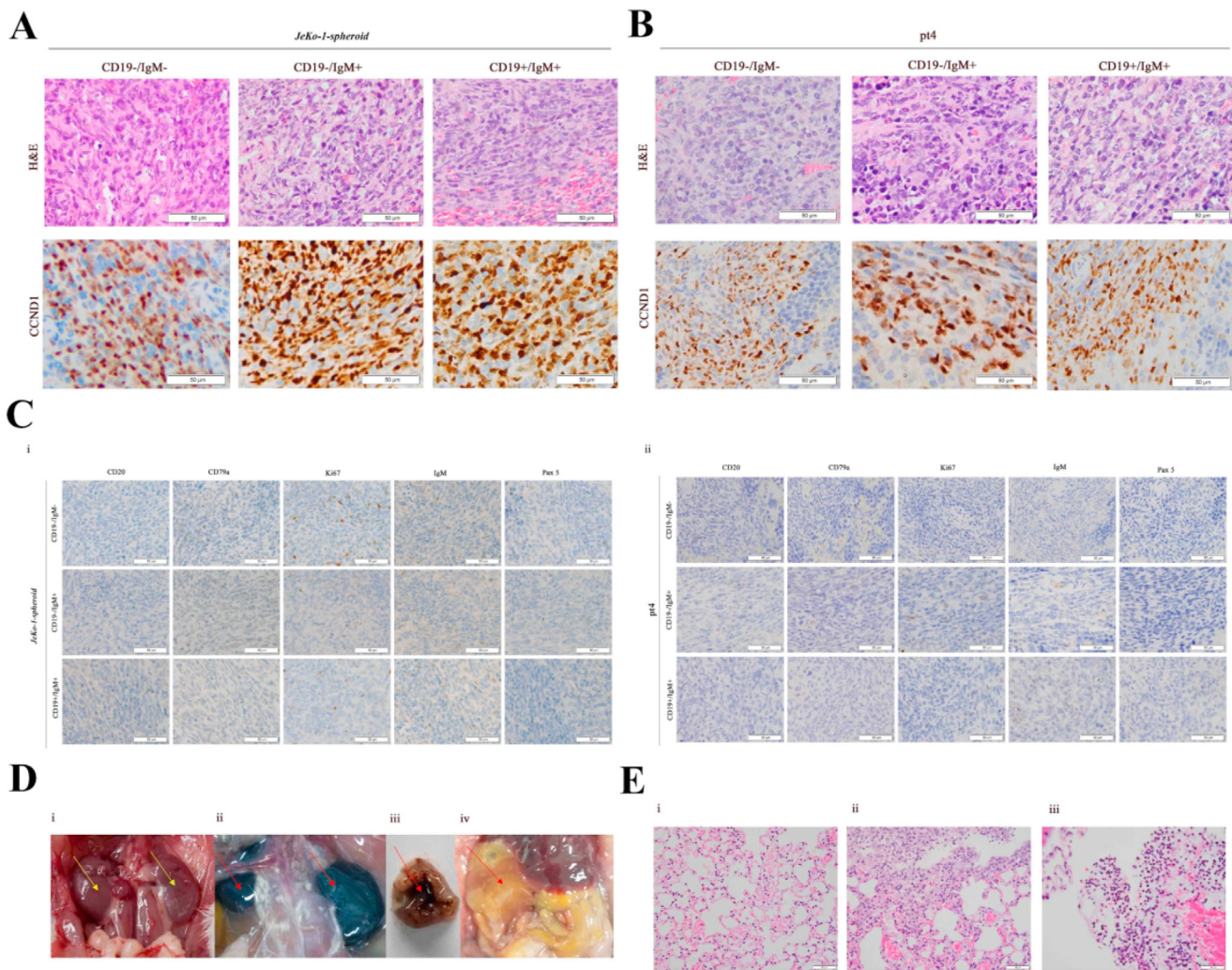


Figure 6